

A top-down view of a messy artist's workspace. In the upper left, a wooden tray holds numerous pencils, pens, and paintbrushes. A tube of white paint lies horizontally across the middle left. A paint palette with a green handle is positioned vertically in the center. To the right, a white bucket contains a thick, yellowish substance, possibly paint or glue. The floor is covered with paint splatters, a white cloth, and other miscellaneous items.

SPRINGFLING

Scotland's Premier Art and Craft Open Studios Event



SPRING FLING SUMMER SALE

This summer we are giving you one more chance to delve into Spring Fling Open Studios 2018.

Although the weekend event has been and gone, some of this year's participants have come together to present visitors, audiences and arts & crafts connoisseurs with one more chance to buy. This online exhibition presents a snapshot of the 2018 event and showcases the vast artistic talents one more time. All proceeds will go towards presenting Spring Fling 2019. The exhibition will run until 30 September 2018.

Every year is a brand new adventure!

Remember to save the date for 2019:
25-27 May 2019

Upland Arts Development CIC presents

25-27 May 2019

SPRINGFLING

Scotland's Premier Art and Craft Open Studios Event





CONTENTS

How it Works

- Buying & Getting Your Work *page 6*

The Exhibition

- Ceramics *page 8*
- Glass *page 16*
- Painting *page 20*
- Photography *page 36*
- Textiles *page 42*
- Illustration *page 48*
- Printmaking *page 54*
- Mixed Media *page 66*
- Willow & Wood *page 72*
- Jewellery *page 78*

- Price List* *page 85*

- Contact information & Acknowledgments* *page 88*



HOW IT WORKS

BUYING

This is an online exhibition held in connection to Spring Fling Open Studios 2018. Images of works are available via this online exhibition and can also be sent individually at the buyers request. Where possible, viewings can also be arranged at the artists studio. Works are showcased per discipline and pricing and information can be found at the back of the catalogue.

To buy a work or make an enquiry, please contact Upland's Events & Exhibitions manager, Joanna Macaulay. T: 07787 299487 or email joanna@weareupland.com Payment can be made via BACS, cheque or Cash. Works will be held until payment is received, however cannot be held for more than 5 working days.

GETTING YOUR WORK

Works can be collected from the Artist's studio or from the Upland office in Dumfries by arrangement. Works can also be posted or couriered at your request. Postage costs are not included in the price of the work and delivery costs will vary from work to work and depend on where it is to be posted. Further information and delivery rates will be given on request to interested parties.



Ceramics

ANDY PRIESTMAN



No. 1



No. 2

Andy makes wheel thrown and wood-fired porcelain and stoneware, with slips and glazes of rich depth and complexity. He makes pots that are good to hold and use.

ARCHIE MCCALL



No. 3



No. 4

Archie's work is in stoneware and richly decorated. Over many years motifs developed which have been distilled from the observation of the natural world in order to create a personal, narrative language. Surfaces are developed using layers of glazes, oxides and gold lustre.



CHRISTINE HESTER SMITH

Christine is happiest when absorbed in a new idea, often working intuitively and solving problems as she goes along. Whether it's a one of her larger illustrative pieces or a simple slip decorated mug, Christine devotes the same amount of love and attention to each.

No. 5



CHRISTOPHER TAYLOR

For Christopher, there is a strong relationship between the process of making and the ways this leaves its evidence on an object. This work explores form, surface pattern and ceramic technique. Through practical investigations, contemporary objects are created which have a sense of 'history'.

No. 6



CLARE DAWDRY

Clare makes useful pots that are well crafted and a pleasure to use. Bowls, mugs, vases and jugs are the foundation of her practice and provide infinite possibilities in exploring clarity of form and functionality.

The decoration is quietly evocative of local land and seascapes.

No. 7



FITCH & MCANDREW

Partners in life and in pottery, Fitch & McAndrew use a limited palette of raw materials, earthenware clay and coloured slips, and aim to extract as much variety from them as possible. Even with these links the pots they make convey our own identities and characteristics.

No. 8

SOLD



Glass



Blatt aus Metall mit

100% Metall



AMANDA SIMMONS

This year Amanda endeavoured to keep experimenting with glass, with a focus on using glass powders in different ways. Still trying to achieve lightweight, ethereal work whilst retaining its strength and stability, Amanda makes freeform slumped wallbased pieces using some medieval techniques.

No. 9



Painting



ANGELA LAWRENCE

Whilst walking the wonderful Galloway coastline, Angela constantly looks for wonderful or unexpected views, intriguing light, tide-marked shorelines and scattered rocks, wistful or enlivening moods. Her work endeavours to paint these in fresh colours, energetic initially, then with detail and increasing but subtle use of palette knife.

No. 10



CATHERINE COULSON

Catherine makes oil paintings informed by wild landscapes and ecosystems. She is passionate about the preservation of unique habitats and the inherent beauty and diversity of wilderness. Motivated by colour and relationships that occur when layering pigments, Catherine expresses atmosphere in nature, and creates aesthetic and emotional impressions.

No. 11



DAVY BROWN

Davy's work is mostly inspired by the Galloway landscape, but he also paints still life, all in oils. Sketches are done outdoors and then developed into paintings in the studio, all in strong colour relationships, and with re-invented structures and highly worked textures.

No. 12



HAZEL CAMPBELL

Hazel works in a bold, loose style using gouache, ink, soft pastel and anything else she can find. The Galloway landscape influences her work, but the finished work might not be a recognisable place.

No. 13



JOHN THRELFALL

John has been developing the links between field-based work, mostly in pastel, and studio painting, invariably in oils, and getting very excited about the results from both! Exploring colour, bolder mark making and a more expressive approach has been fun for John.

No. 14

SOLD



ELIZABETH GILBEY

Elizabeth is a classically trained figurative artist working directly from nature. She loves to be outdoors sketching landscape and animals around her studio. Elizabeth also make still life paintings in oils and pastels which capture the visually "tasty" aspects of fruit, vegetables and flowers.

No. 14



LIZ PERRY

Of late Liz has been developing some abstract work from a trip to Shetland which is evolving into paintings and printmaking. She paints with acrylics, oils and other media, applied to a variety of surfaces. The processes of producing texture and exploring colour are the foundation of the work created.

No. 16



MICHAEL BATEY

Michael is an oil painter principally, but is starting to sneak some watercolours into his ethereal mind. Finding light is the main focus in Michael's work.

No. 16



PHILIPPA SINCLAIR

Philippa paints using watercolour as her style is to produce fluid and expressive paintings concentrating on the essence of the image. Colour is the key inspiration for her work and choice of subject be it sea, land or cityscape. She is also exploring painting on silk and fabric.

No. 18



WILLIAM SPURWAY

William is a painter and printmaker of Scottish landscapes focusing on the forests, lochs and skies of Dumfries and Galloway. Painting in oils both figuratively and with leanings towards semi-abstraction. In his printmaking, William explores form and texture using drypoint and carborundum processes.

No. 19

MARGARET WALTY



No. 20



No. 21

Love of intricacy and detail, clarity of line and colour characterise Margaret's work. The beautiful landscapes of her home in the borderlands inspire her directly as well as symbolically, in painted explorations of the borders between fantasy and reality.

SUZANNE STUART DAVIES



No. 22



No. 23

Suzanne described herself as a slow painter – making ‘journey books’, describing walks, collecting ideas and images. These paintings have developed from Galloway walks and studies. Paintings in oil on canvas and board develop their own impetus from these journeys.



BELLA GREEN

Bella makes playful, colourful compositions from observation of everyday objects and places. Vessels, flowers and window views feature strongly. Her main painting mediums are oil and acrylic paints to which she has recently added polymer clay. With these combinations she is exploring using gestural paint with geometric and organic pattern. She also makes one of a kind jewellery pieces in polymer clay. See No 54 for an example.

No. 24





PHOTOGRAPHY



ALISTAIR HAMILTON

Alistair makes photographs that show pattern, detail and texture. His subjects range from tiny features that go unnoticed to whole landscapes, but it is always the details that are important to his work. Alistair wants his photographs to share the way he looks at the world.

No. 25



LAURA HUDSON MACKAY

As a photographic artist, Laura has been exploring links between stories and storytelling traditions in different cultures. The latest collection of work is inspired by research gathered for the project 'Confluence' at Wigtown Book Festival 2017 and other events held in both Scotland and Morocco.

No. 26



MICHAL ŠŮR

Michal specialises in infrared black & white photography. His creative process takes place outdoors. Michal's work is about light, contrast and movement in nature. No matter how much people alter their environment, nature will eventually win. That is the main inspiration behind Michal's work.

No. 27





TEXTILES



JO GALLANT

Jo's work is very much influenced by her surroundings: birds, trees, mountains and weather, and also by her love of colour. Jo hand dyes cottons, silks and linens, in a variety of textures, to make cushions, scarves and wall hangings

No. 28



KAY RIBBENS

Kay is a textile designer specialising in creating original and distinctive hats and headwear of universal appeal. Her work is an ongoing experiment designing individual handwoven pieces of wearable sculpture. A new twist on traditional berets to large eccentrics.

No. 29

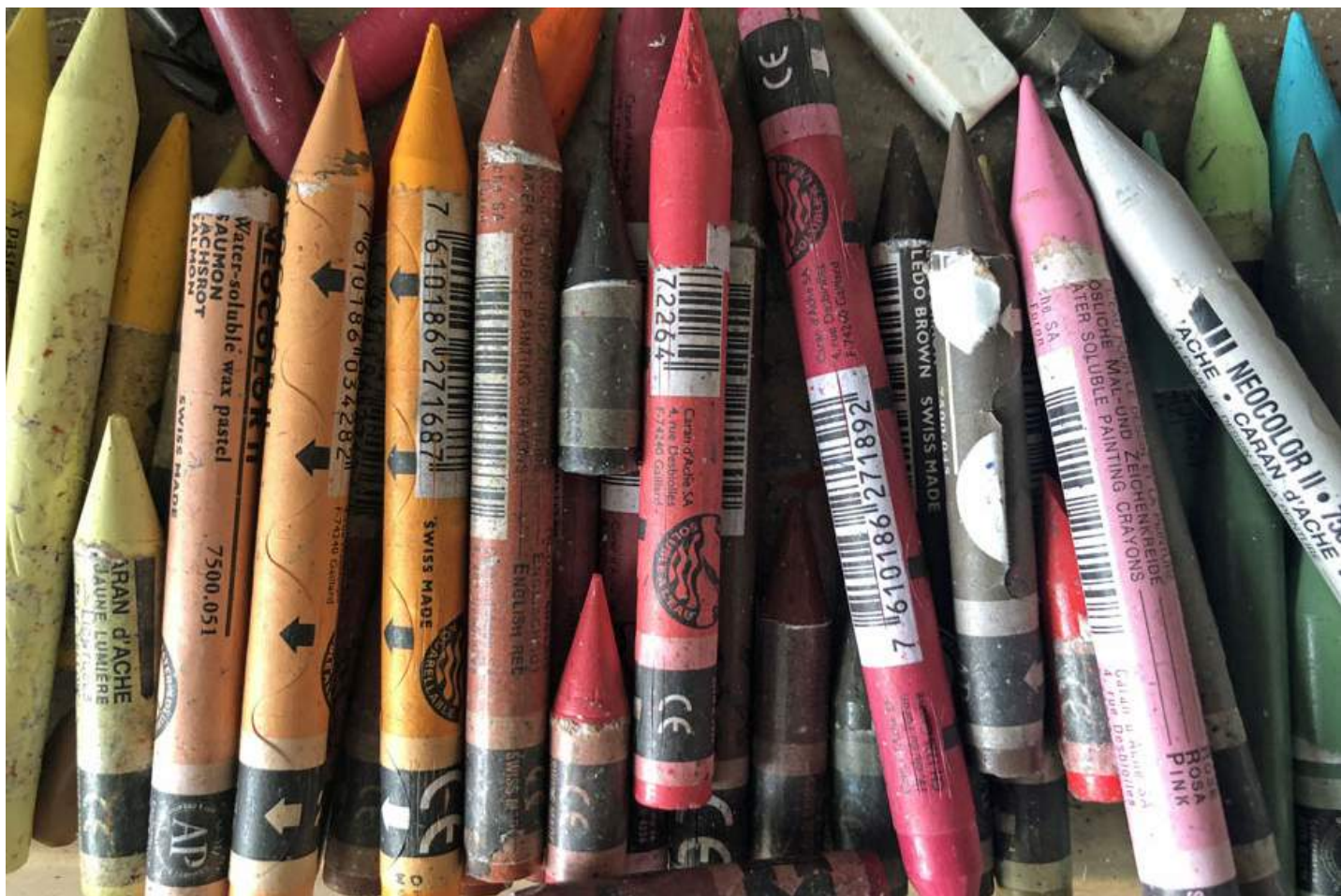


LAURA DERBY

Laura designs and makes lasting quality wool pile rugs to her own design and to commission. This rug was inspired by young people away off travelling around the world.

No. 30





ILLUSTRATION



LUCY HADLEY

Lucy is an illustrator whose love for the natural world is often reflected in her work. She uses a variety of materials to create her visual world and enjoys mixing traditional mark-making techniques with modern digital practices.

No. 31



VAL MACADAM

Val's drawings are illustrative in nature with a strong visual narrative, inspired by country life, memories and wordplay. With the detail, energy and humour in her quirky style, Val endeavours to create cheerful and uplifting images that she hopes will make people smile.

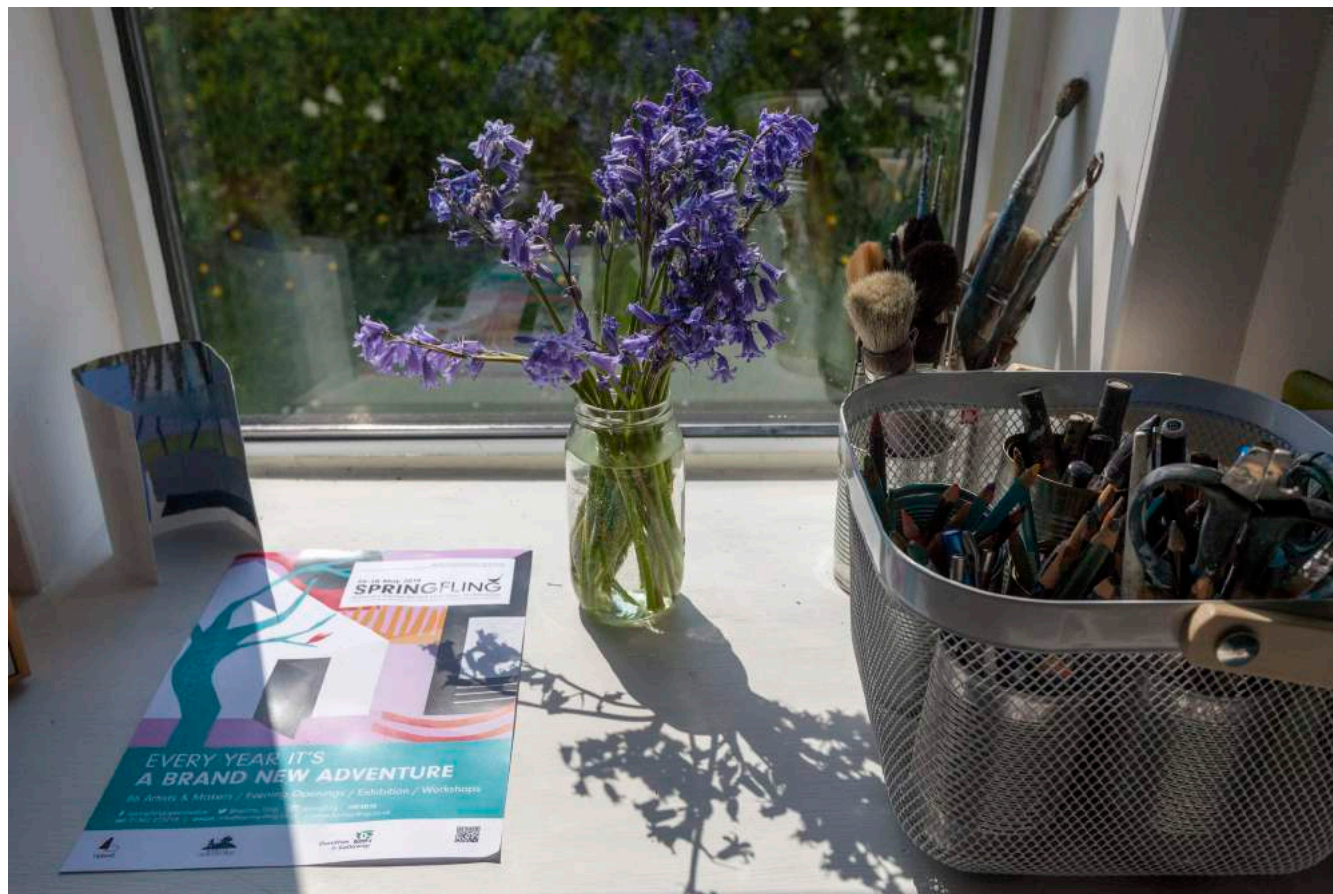
No. 32



AILSA BLACK

Ailsa's art is inspired by living on the beautiful Galloway coast and her love of the villages, wildlife and animals that surround her. Images capture the happiness and simplicity of the good things in life.

No. 33





PRINTMAKING



CLAIRE CAMERON-SMITH

Claire makes prints by carving designs into blocks of wood and printing from them by hand using Japanese tools and techniques. Some images are black and white, whilst others are in full colour. She also uses embossing, stencilling or gilding to enhance her designs.

No. 34



HEATHER BLANCHARD

The whole process for Heather begins in the great outdoors. Sometimes her work depicts the unconsidered landscape - trees, gates, tracks. In themselves maybe uninspiring, but they rarely stand alone and are often elevated by weather and light conditions. Recreating that experience is the constant challenge.

No. 35



CLARE MELINSKY

Clare's lino cut prints are commissioned by publishers and designers. The cover and illustration for the latest book by garden designer Dan Pearson 'Natural Selection' was on show at Spring Fling. During February each year Clare runs lino cut printmaking workshops in Thornhill.

No.36



COLIN BLANCHARD

Colin is principally a printmaker. He aims to produce original works - in genuinely limited editions - that make use of the qualities that only hand crafted techniques can offer. Colin works mainly in linocut and screenprint and combinations of the two.

No. 37



GAIL KELLY

Gail's inspiration comes from the beautiful countryside and gardens of the British Isles and Ireland. She prints her own linocut designs on Irish linen and sews them by hand to create unique collages.

No. 38



PAMELA GRACE

Pamela is an artist and printmaker. Much of her work is based on drawing, preferably working outside, capturing seasonal changes in the Galloway countryside. Alongside wider landscapes, Pamela looks at details of hedgerows, gardens and allotments.

No. 39



SARAH STEWART

Sarah is a printmaker working with silkscreen and relief printing processes. With an interest in audience engagement and a desire to create tactile pieces which can be held and used, Sarah applies her designs across a variety of textiles and book forms.

No. 40

LISA HOOPER



No. 41



No. 42

Lisa is a printmaker using several different print media to portray wildlife (mainly birds) and coastal villages in Scotland. Her linocuts, woodcuts and etchings are an attempt to capture the essence of the subjects which inspire her.

JANE HOWE



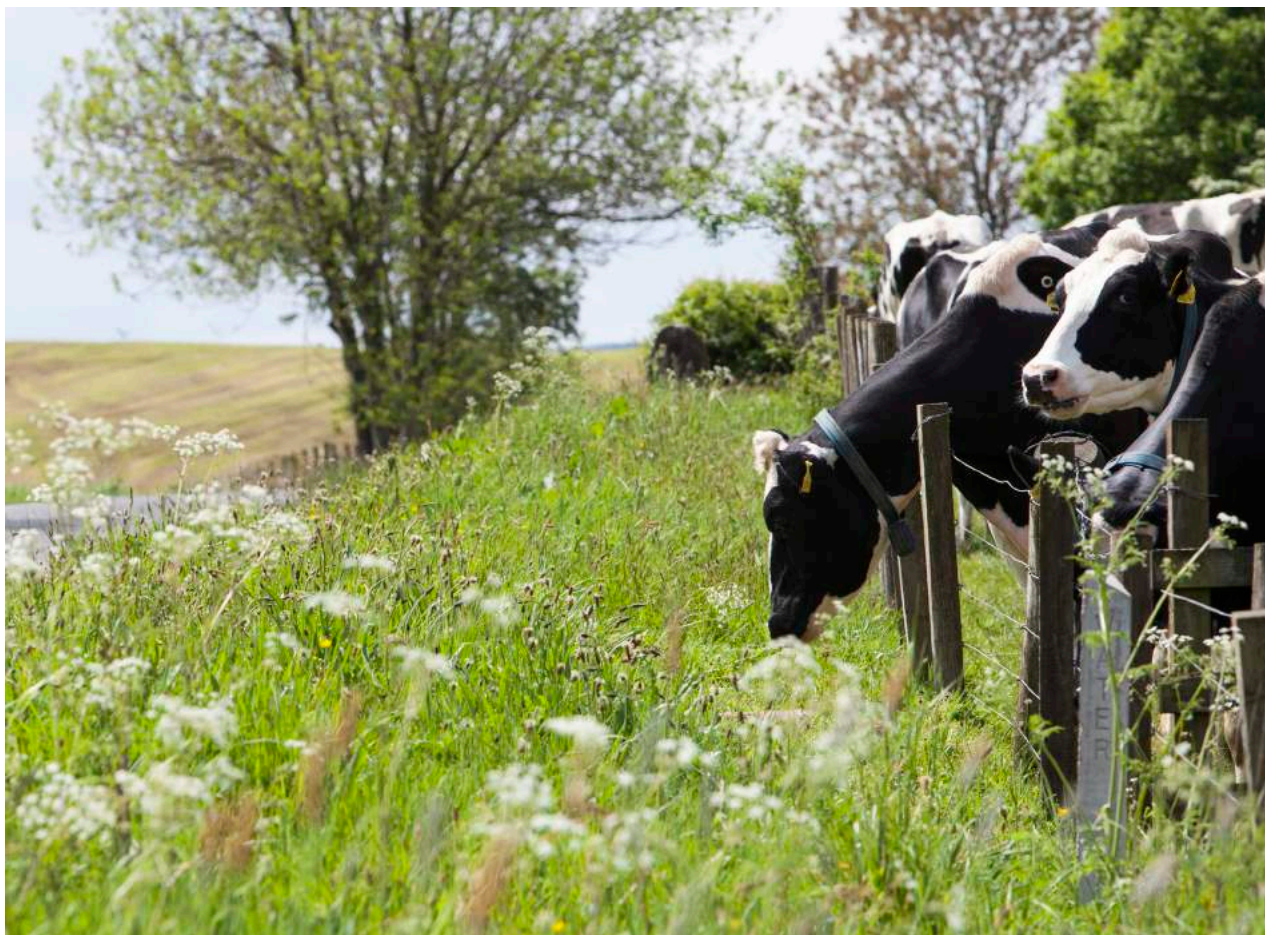
No. 43



No. 44

The human figure is still an important part of Jane's work and using light through a window or door which adds perspective and also a story element. Jane has started to venture into landscapes but always includes signs of human presence eg. a boat, house, fence, a gate.





MIXED MEDIA



HELEN ACKLAM

Helen's mixed media work is inspired by the Scottish islands with their rich heritage, culture and history. Work includes watercolours, textured canvases and continued development of plaster, wool and textile works.

No. 45



JENNIE ASHMORE

Jennie uses pressed leaves and flowers from gardens and wild places to create Leafworks in the hope of reflecting the beauty and vibrancy of the natural world. Jennie also uses paint and other media combined with natural materials.

No. 46



MAGGIE AYRES

When you stand in front of a piece of Maggie's work, you are looking through numerous physical layers of beeswax and tree resin. Each fresh application of this encaustic medium allows for the inclusion of oil paint, papers, fabric, threads and textural mark making.

No.47

SOLD





WILLOW & WOOD



GEOFF FORREST

Usually, based on the wild, windy shores of Loch Doon, Geoff's work reflects the environment around him. Geoff works in willow and mild steel to create 'pebble' and 'wave' baskets, boats, leaves, and some recently inspired arches, oh, and the maybe the odd hare!

No.48



LIZZIE FAREY

Lizzie makes intricate willow structures that capture a still moment, a distillation and order. Lizzie has been based in Galloway for the past 30 years, the rural setting of her home and studio are her guiding inspiration.

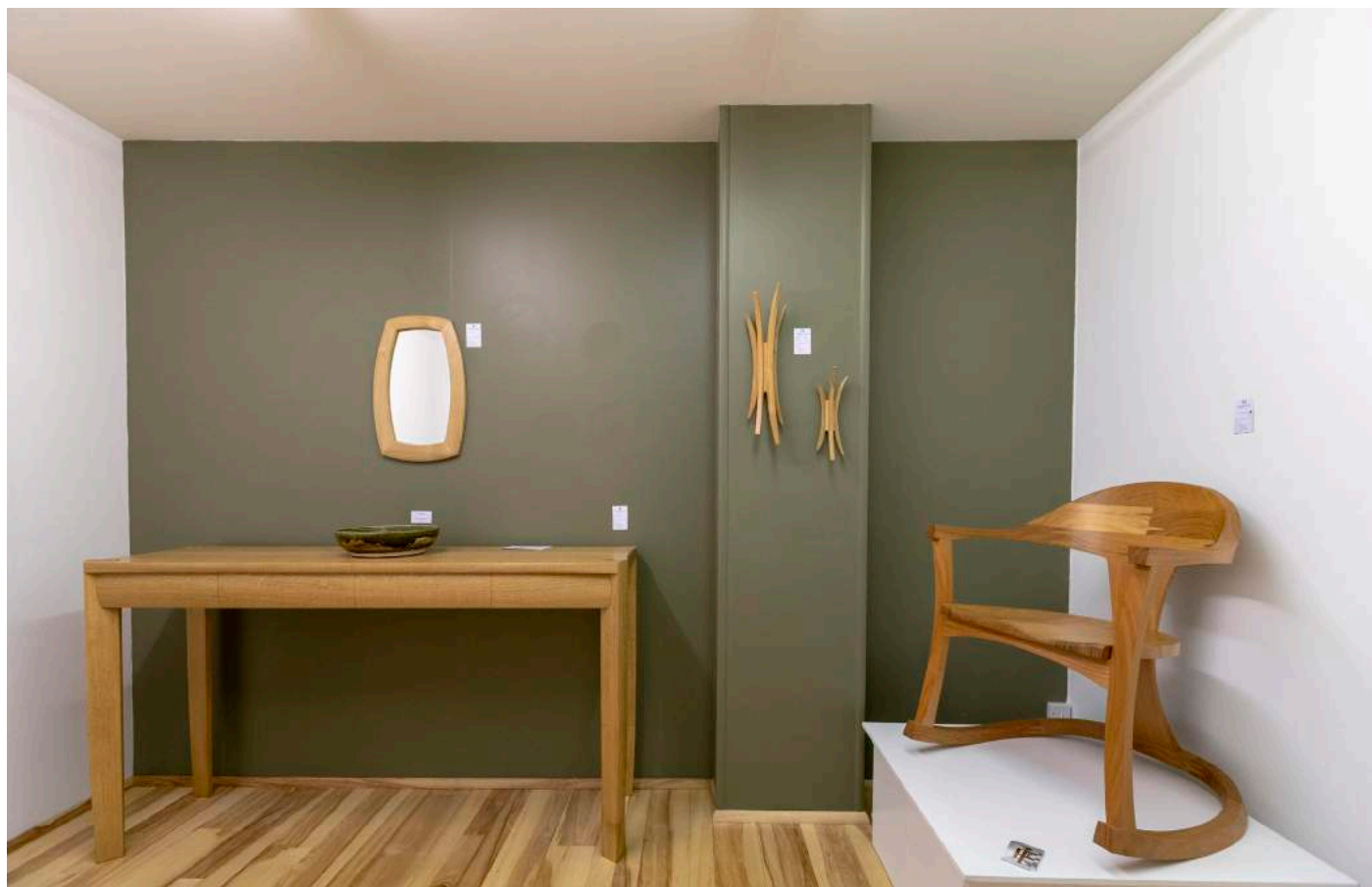
No.49



DANIEL LACEY

In Daniel's studio he creates sculptural contemporary furniture from native woods. The aim is to produce work of the highest quality – both in design and craftsmanship providing a uniquely different solution to your furniture needs. All designed, created and hand finished by Daniel.

No. 50





JEWELLERY

LISA ROTHWELL-YOUNG



Lisa makes handmade contemporary jewellery from her Langholm workshop using traditional tools and techniques, as well as, Fairmined and premium recycled precious metals; silver, gold, palladium, platinum and fully traceable ethically sourced gemstones. A large proportion of her work is to commission, including remodelling old jewellery into new.

No. 51



TERRI CAMPBELL

Terri's jewellery is inspired by nature, organic forms and her home environment. She works mainly in silver, using yellow gold and gemstones for subtle details.

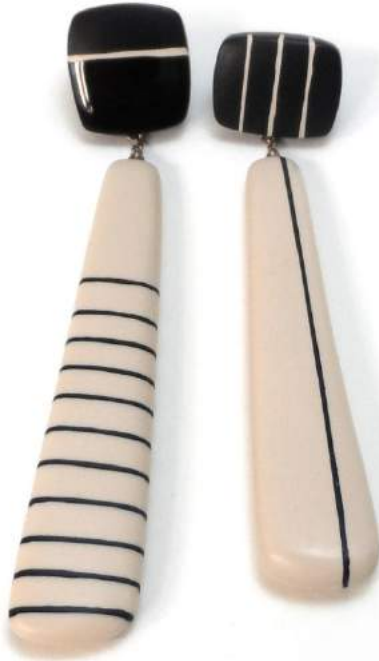
No. 52

KAZ ROBERTSON

Working mainly with resin, Kaz creates pieces which combine a bold colour palette with pattern. Some pieces have magnets incorporated and others are reversible. Mismatch is also a strong element within her work.

No. 53

SOLD





BELLA GREEN

Each piece of Bella's polymer jewellery is one of a kind .She creates these unique pieces using polymer clay and various techniques including 'kaleidoscope caning'. This piece, a method known as 'bargello', where strips of colours are arranged to make the pattern. The colours are not painted on. The piece is then cured and sanded and buffed. The bow tie may be worn as a brooch or as a pendant. It comes with a faux suede cord or you can use your own chain.

No. 54

ALISON MACLEOD



No. 55



No. 56

Alison makes jewellery inspired by heirloom treasures and the stories they tell. Her Catkin Collection, which draws from an antique ring seen years ago, is made by layering hundreds of tiny disks to make a pattern reminiscent of the Spring catkin flower.



PRICE LIST

CERAMICS *p8*

1. Andy Priestman, Stoneware Beaker, Luce Bay wild clay slip, pale celadon glaze and local iron ore banding (7.5 H 9.5cm W) £30.00
2. Andy Priestman, Stoneware Beaker, Luce Bay wild clay slip, pale celadon glaze and local iron ore banding (7.5 H 9.5cm W) £30.00
3. Archie McCall, Black and White Tea Bowl with Gold Lustre, Stoneware (12.5 H 10.5 cm W) £80.00
4. Archie McCall, Orange Shino Tea Bowl with Gold Lustre, Stoneware (11 H 10 cm W) £80.00
5. Christine Hester Smith, Bee Mug, Ceramic with reg clay slips,(11 x 9 cm) £24.00
6. Christopher Taylor, Mugs, £32.00 for pair
7. Clare Dawrdy, Jug, Stoneware (14.5 H 9.5 cm W) £48.00
8. Fitch & McAndrew, Wet Sgraffito Jug, (24 H 18 D 17 cm W) £95.00 **SOLD**

GLASS *p16*

9. Amanda Simmons, Mad Hatters Toxic Tea Party - cup, saucer and spoon, Kilnformed Glass, (vessel 10cm H, 5cm D, saucer 14 cm D) £95.00

PAINTING *p20*

10. Angela Lawrence, Along the Causeway, Kippford, Oil on Canvas, (36 x 30 cm framed) £275.00
11. Catherine Coulson, Thistle Meadow, Oil on Canvas Board, (12 x 14 inches framed) £150.00
12. Davy Brown, The Pink Table, Oil on Board, (12 x 12 inches) £1,250
13. Hazel Campbell, Garden Border, Gouache, (56 x 40 cm) £400.00
14. John Threlfall, Daffodils, Pastel, (24 x 24 cm) £150.00 **SOLD**

- 15 Elizabeth Gilbey, *Still Life of Vietnamese Teapot & Flat Peaches*, Oil on canvas (10 x 10 inches) £350.00
16. Liz Perry, *Unearthed III*, Acrylic on watercolour paper, (12 x 9.5 inches) £150.00
17. Philippa Sinclair, *Oryx*, Watercolour limited edition print, (14 x 17 inches) £140.00
18. Michael Batey, *Geal (clear, shine, glow)*, Oil on panel, (8 x 6 inches) £130.00
19. Margaret Walty, *King of the Wildwood*, Limited edition giclee print, (13 x 13.5 inches) £80.00
20. Margaret Walty, *Harebells*, Limited edition giclee print, (13 x 13.5 inches) £80.00
22. Suzanne Stuart Davies, *Treading Water*, Oil on canvas, (32.5 x 32.5 cm) £225.00
22. Suzanne Stuart Davies, *Walking the Winter Shore*, Oil on canvas, (32.5 x 32.5 cm) £225.00
23. William Spurway, *Sky Study II*, Oil on paper, (30 x 40 cm) £175.00
24. Bella Green, *Dappled Bunch*, Acrylic on canvas, (18 x 18cm) £100.00

PHOTOGRAPHY p36

25. Alistair Hamilton, *Footsteps by the Dee*, Limited edition mounted photography 4/5, (65 x 50 cm) £60.00
26. Laura Hudson Mackay, *Edge Dwellers*, Limited edition photograph 1/15, (20 x 18.5 inches) £175.00
27. Michal Šúr, *Crawford Castle*, Photograph (50 x 50cm) £115.00

TEXTILES p42

28. Jo Gallant, *Pied Wagtail Cushion*, Cotton and feather filled, (30 x 45 cm) £60.00
29. Kay Ribbens, *Balmoral Hat*, Cotton yarn, (30cm) £69.00
30. Laura Derby, *Transglobal*, Hand tufted wool pile rug, (120cm diameter, 1cm pile) £300.00

ILLUSTRATION p48

31. Lucy Hadley, *Cairnsmore Nature Reserve*, (15 x 15 inches) £120.00
32. Val Macadam, *Flower Power*, Wax Pastels, (30 x 30cm) £135.00
33. Ailsa Black, *Drifters*, Giclee print (56 x 56 cm) £128.00

PRINTMAKING p54

- 34. Claire Cameron-Smith, *Rooster and Hen*, after Koson, Woodblock print, (8 x 10 inches) £60.00
- 35. Heather Blanchard, *Blue Shadows*, Original hand printed screenprint limited edition, (30 x 34 cm unframed) £80.00
- 36. Clare Melinsky, *Summer Walk*, Lino cut print unframed, (27 x 21 cm) £85.00
- 37. Colin Blanchard, *Throstle*, Hand crafted limited edition print, (19 x 42 cm unframed) £120.00
- 38. Gail Kelly, *Harvest Time*, Hand stitched collage of lino cuts printed on Irish linen, (34 x 29 cm) £140.00
- 39. Pamela Grace, *January Beeches*, Solar-plate Etching, (37 x 43 cm) £130.00
- 40. Sarah Stewart, *Feather, Striped*, Reduction lino cut, (12.5 x 12.5 cm unframed) £20.00
- 41. Lisa Hooper, *Stinking Port*, Lino cut print, (30 x 30 cm) £200.00
- 42. Lisa Hooper, *Invited Guests*, Reduction lino cut, (60 x 14 cm) £210.00
- 43. Jane Howe, *Tears such as Angels weep, Burst Forth, Milton*, Plate Litho, (37 x 27 cm unframed) £70.00
- 44. Jane Howe, *Transparent...Life*, Cyanotype Print, (30 x 20 cm unframed) £50.00

MIXED MEDIA p66

- 45. Helen Acklam, *Arnol*, Mixed Media, (27 x 28 cm mounted) £60.00
- 46. Jennie Ashmore, *Kirklea Garden 2017*, Pressed leaves and watercolour, (30 x 30cm) £120.00
- 47. Maggie Ayres, *Fragment*, Beeswax, damar resin and oils on wood panel, (15 x 15 cm) £80.00 **SOLD**

WILLOW & WOOD p72

- 48. Geoff Forrest, *Blue Wave Basket*, Willow with acrylic finish, (40 H x 60 cm D) £140.00
- 49. Lizzie Farey, *Seedheads*, Willow, (110cm H x 50 cm W) £165.00
- 50. Daniel Lacey, *2 Cantilevered Shelves*, Cherry Wood, Oil finished, (64 x 64 x 14 cm) £480.00

JEWELLERY p78

- 51. Lisa Rothwell-Young, *Lichen Disc Ring*, Silver and Emerald, (disc 14mm D 2mm band wide), £175.00
- 52. Terri Campbell, *Rectangle Autumn Studs*, Silver with oxidised silver detail, (0.5 x 1.5 cm each) £33.00
- 53. Kaz Robertson, *Long Rectangle Earrings*, Resin and Silver, (9.5cm L 1.8cm W) £90.00 **SOLD**
- 54. Bella Green, *Bow Tie Brooch/Pendant*, Polymer Clay, (8 x 4 cm) £30.00
- 55. Alison Macleod, *Catkin Wreath Necklace*, Sterling Silver, carved Jade and Rock crystal, (pendant 5 x 2.5 cm, chain 45 cm approx) £350.00
- 56 Alison Macleod, *Catkin Butterfly Hook Earrings*, Silver, (2 x 2 cm) £90.00

CONTACT

For all enquiries please contact Joanna Macaulay, Upland's Events & Exhibitions Manager.
T: 07787 299487 E: joanna@weareupland.com

ACKNOWLEDGMENTS

With special thanks to all who have taken part in this Spring Fling exhibition. The sale of all works in this exhibition goes towards presenting Spring Fling 2019. Without the continual support of our artists and makers we wouldn't have the high-quality event we do today.
Image credits to Colin Tennant, Upland and participants.





www.weareupland.com

Upland is a registered company no. SC350101 in Scotland. Gracefield Arts Centre, 28 Edinburgh Road, Dumfries, DG1 1JQ